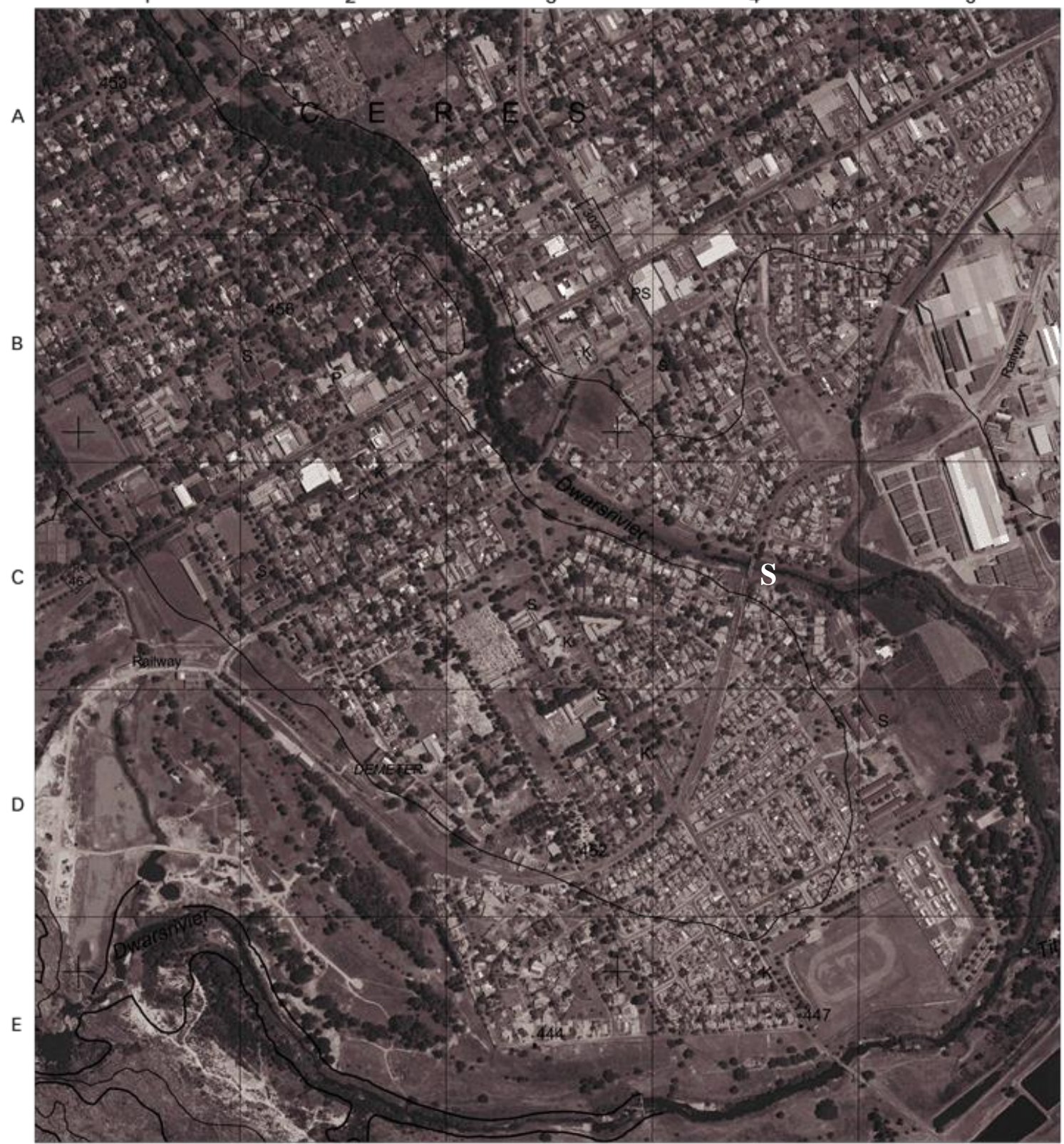
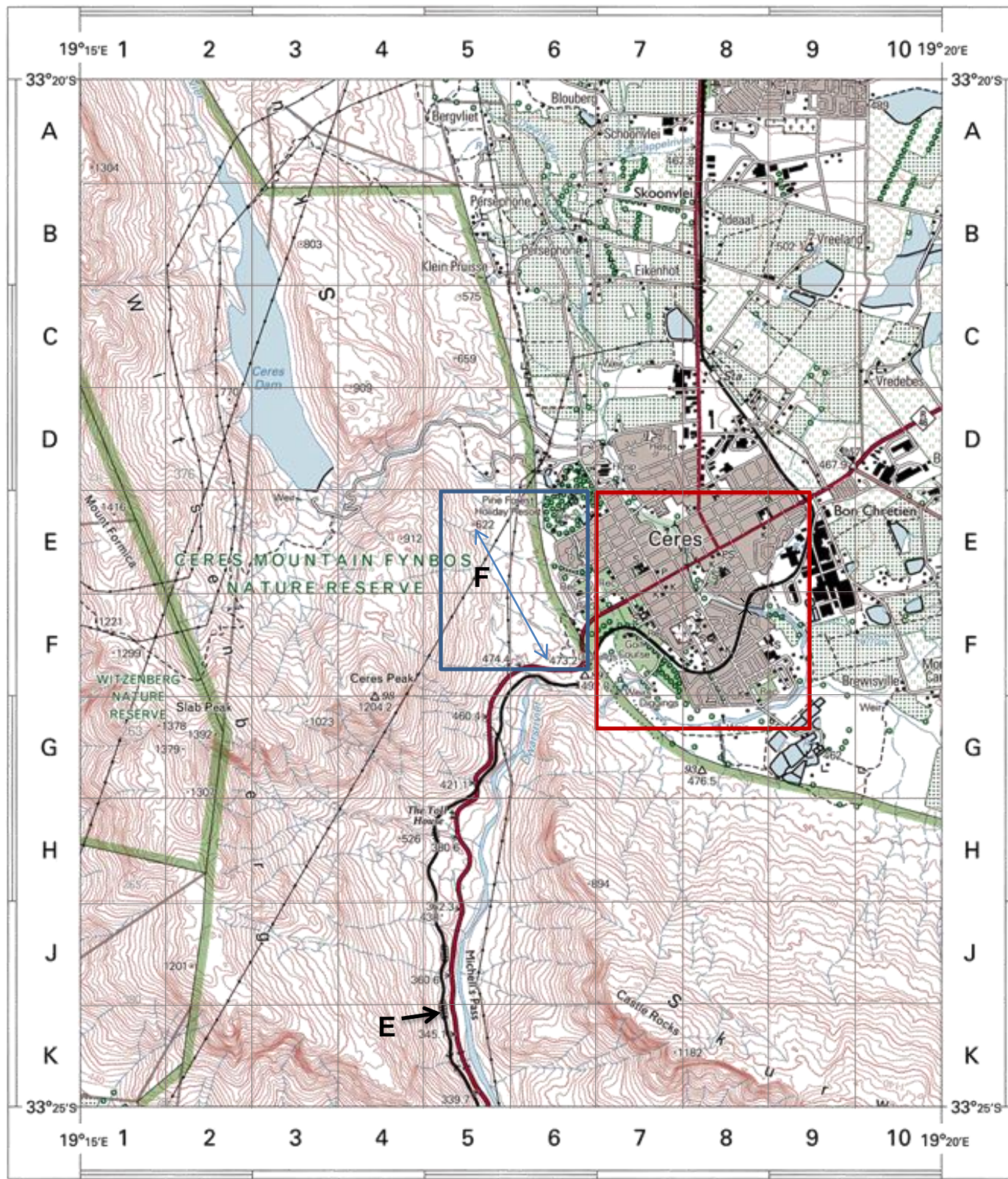


EXTRACT FROM 3319AD CERES

1:50 000

EXTRACT FROM 3319AD 12 ortho - rectified image

1:10 000



Mean magnetic declination 24°38' West of True North (October 2014).
 Mean annual change 5' westwards (Oct. 2014 - Sept. 2015).

CONTOUR INTERVAL 20 METRES
REFERENCE

National Freeway; National Route		International Boundary and Beacon		Fence; Wall	
Arterial Route		Provincial Boundary		Windpump; Monument	
Main Road		Protected Area		Communication Tower	
Secondary Road; Bench Mark		Perennial River		Mine Dump; Excavation	
Other Road; Bridge		Non-perennial River		Trigonometrical Station; Marine Beacon	
Track and Hiking Trail		Non-Perennial Water		Lighthouse and Marine Light	
Railway; Station or Siding		Dry Water Course		Cemetery; Grave	
Other Railway; Tunnel		Dry Pan		Erosion; Sand	
Embankment; Cutting		Marsh and Vlei		Woodland	
Power Line		Pipeline (above ground)		Cultivated Land	
Built-up Area (High, Low Density)		Water Tower; Reservoir; Water Point		Orchard or Vineyard	
Buildings; Ruin		Coastal Rocks		Recreation Ground	
Post Office; Police Station; Store		Prominent Rock Outcrop		Row of Trees	
Place of Worship; School; Hotel				Original Farms	

1:10000 KONTOERTUSSENRUIMTE 5 METER
VERKLARING

Nasionale Deurpad; Nasionale Roete		Internasionale Grens en Baken		Draadheining; Muur	
Hoofverkeersroete		Provinsiale Grens		Windpomp; Monument	
Seekpad		Bewarings Gebied		Kommunikasietoring	
Hoofpad; Hoogtemerk		Standhoudende Rivier		Mynhoop; Uitgrawing	
Ander Pad; Brug		Standhoudende Water		Peilbaken; Seevaartbaken	
Dowwe Pad en Voetslaanpad		Nie-standhoudende Rivier		Vuurtoring en Seevaartlig	
Spoorweg; Stasie of Sylyn		Nie-standhoudende Water		Begraafplaas; Graf	
Ander Spoorweg; Tonnel		Droë Loop		Erosie; Sand	
Opvulling; Deurgrawing		Moeras en Vlei		Beboste Gebied	
Kraglyn		Pyplyn (bo die grond)		Bewerkte Land	
Beboude Gebied (Hoë, Lae Digtheid)		Wateroring; Reservoir; Waterpunt		Boord of Wingerd	
Geboue; Mursie		Kuslynrotse		Ontspanningsterrein	
Poskantoor; Polisieostasie; Winkel		Prominente Klipbank		Rye Bome	
Plek van Aanbidding; Skool; Hotel				Oorspronklike Plaas	